



An interactive installation and  
sound-sculpture  
by  
Cecile Williams – Sculptor  
Peter Keelan – Musician  
A Percent for Art project for the  
Education Department of  
Western Australia





Cecile Williams' and Peter Keelan's installation at Clarkson Community High School is the first interactive artwork commissioned through the Percent for Art Scheme. The artwork is also a "first" in that it is a creative collaboration between the two disciplines; Sculpture and Music. The installation consists of a full-height wall panel, leaning out into the foyer of the Performing Arts Building. Within this panel are three elements:

**The Ear**

The "Ear" is a sculpture and sound installation, activated by pressure switches beneath the carpet. Having detected the presence of people, the ear begins broadcasting. The resulting soundscape relates to the ocean, and is designed to create a relaxing, listening space, amidst the bustle of everyday activity. Twenty-three students were involved as composers, musicians, poets and scriptwriters, in the production of the soundscape under the guidance of Peter Keelan. Traditional instruments were blended with instruments created specifically for this recording. A CD was produced as a permanent record of the work.

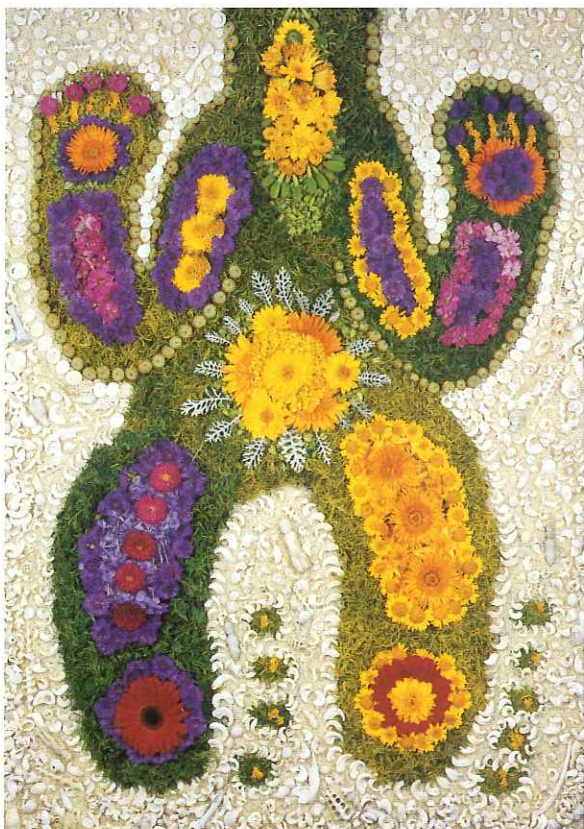
**Care**

"Care" is a sculpture representing growth, energy care and life. A delicate shoot springs from its seed at the

"heart" of life. Hovering protectively above is a human hand. The hand symbolises our responsibility to care for nature (the environment) and to care for each other.

**The Students**

This interactive sculpture, representing the students of Clarkson Community High School, consists of a fixed "head": symbolising the creative and positive qualities within each person. Beneath the fixed head are two interchangeable bodies, illuminated as the floor switches are activated. These bodies are images of light, created from original, temporary works by the students, under the guidance of Cecile Williams. The first body, a running man, is made from spray-painted, found objects, on a bed of sand and shells. His themes are "recycling", "technology" and "the environment". The second body is that of a woman, created from a collage of brightly coloured flowers. Her theme is "care for the environment".



**Acknowledgements:**

Electronics Engineer: Wayne Osborn  
 Architectural integration: Loftus Walker Hewitt Architects in association with Taylor Robinson Pty Ltd Architects  
 Photography: The artist/Victor France

This project was completed with the support and participation of the staff and students of Clarkson Community High School.

