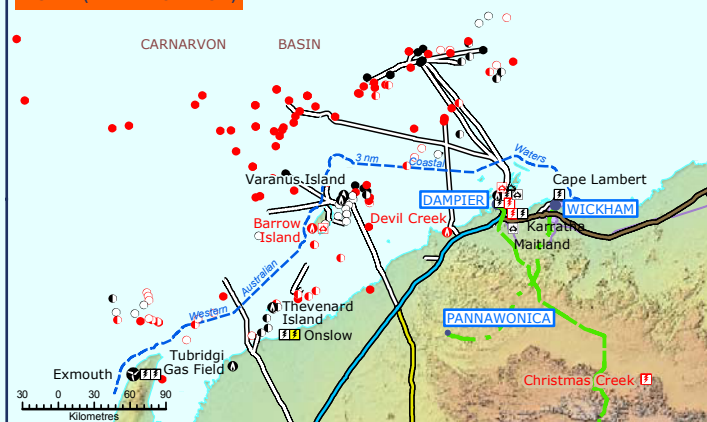


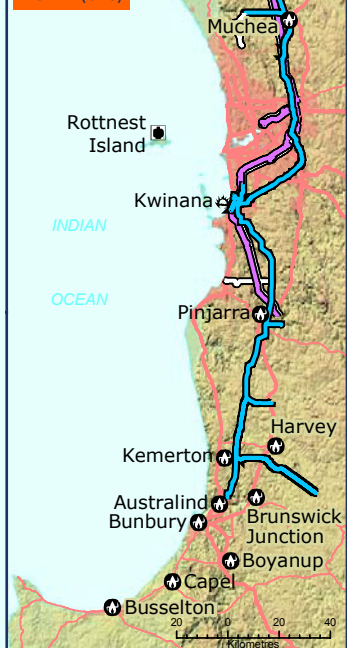
Energy Resources and Infrastructure

SEPTEMBER 2010

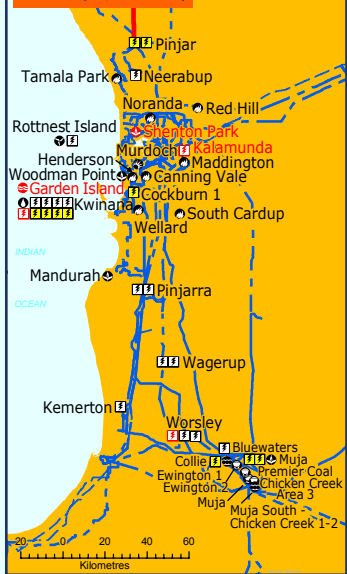
INSET C (CARNARVON BASIN)



INSET B (GAS)



INSET A (ELECTRICITY)



LEGEND

Plant committed/under construction & undeveloped energy resources are shown in red
Developed resources/existing infrastructure/projects are shown in other colours

ENERGY RESOURCES

- Coal Deposits
- Gas Field
- Oil and Gas Field
- Oil Field
- Uranium

ENERGY INFRASTRUCTURE

- Gas Pipeline Compressor Station
- Liquefied Natural Gas Plant
- Liquefied Petroleum Gas Plant
- Natural Gas Plant
- Natural Gas Storage
- Oil Refinery

GAS DISTRIBUTION SYSTEMS

- Mid West & South West Gas Distribution System
- Liquefied Petroleum Gas Distribution System
- Natural Gas Distribution System

ELECTRICITY GENERATION STATIONS

- Private power stations over 10MW or supply power to Verve Energy/Horizon Power
- State Utility owned power stations

Non-renewable Fuel

- Biomass
- Hydro
- Landfill Gas

Renewable Fuel

- Solar
- Wave
- Wind

NATURAL GAS TRANSMISSION PIPELINES

- Dampier to Bunbury Natural Gas Pipeline
- Goldfields Gas Pipeline
- Kalgoorlie to Kambalda Pipeline
- Kambalda to Esperance Gas Pipeline
- Mid West Pipeline
- Pannawonica Pipeline
- Pibara Energy Pipeline
- Teller Gas Pipeline
- Lateral Pipelines and Trunklines

OWNER

- DENGP (WA) Pipeline Trust
- Goldfields Gas Transmission Pty Ltd
- Southern Cross Pipelines Australia Pty Limited
- Esperance Pipeline Company Pty Ltd
- Australian Pipeline Trust
- Australian Pipeline Trust
- Epic Energy (Pibara Pipelines) Pty Ltd
- Gas Transmission Services WA (Operations) Pty Ltd
- Various

ELECTRICITY TRANSMISSION LINES

- Western Power (SWIS)
- Horizon Power (NWIS)
- Private
- Proposed

ELECTRICITY DISTRIBUTION SYSTEMS

- Western Power South West Interconnected System (SWIS)
- Horizon Power North West Interconnected System (NWIS)
- Horizon Power Esperance System

NEWMAN

- Towns supplied by Electricity Supply Authorities

Jigalong

- Remote communities that generate >1MW of electricity

The Energy Resources and Infrastructure Map is published by the Office of Energy, Government of Western Australia
General enquiries may be made to:
Coordinator of Energy, Office of Energy
Level 5, Governor Stirling Tower, 191 St Georges Terrace, PERTH Western Australia 6000
Tel: (08) 9420 5500 Web site: www.energy.wa.gov.au
Email: enquiries@energy.wa.gov.au
Fax: (08) 9420 5700
Relief Shading by GSWA using Shuttle Radar Topography Mission (SRTM) data from NASA (<http://srtm.csl.noaa.gov/>) processed by CIAI (<http://web.csl.noaa.gov/>)

